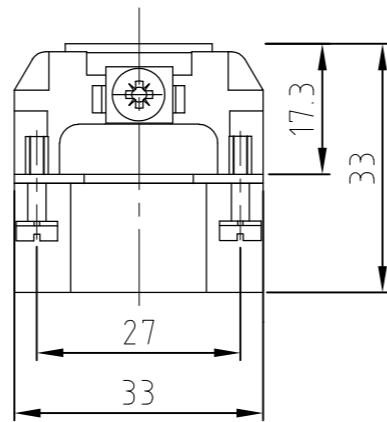
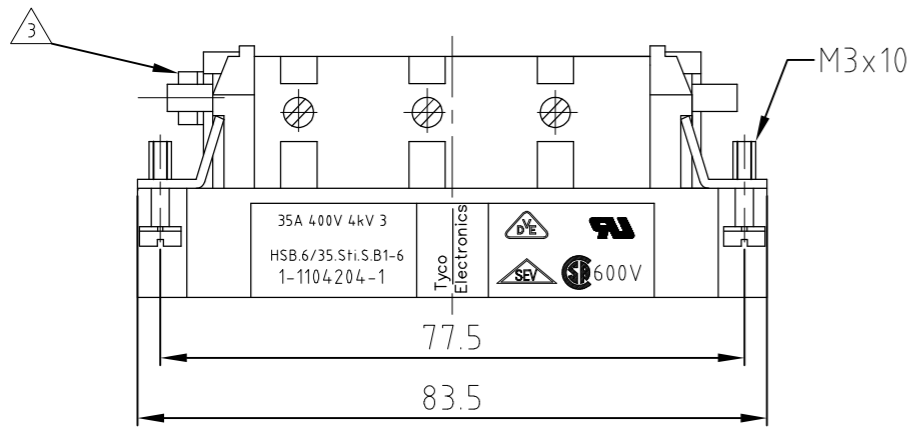
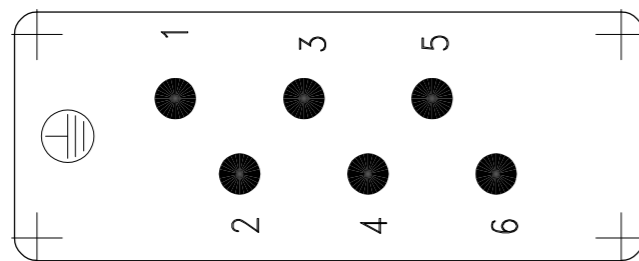


NOTES

- 1 FINISH: CONTACT , AG
- 2 POWER CONTACT: 1 TO 6  
OUTER DIMENSIONS OF INSULATION: MAX.  $\phi$  7.0 MM
- 3 GROUNDING CONTACT
- 4 SUITABLE HOOD SIZE 6: SERIES HB; HD; EMV; HIP
- 5 STANDARDS:  
DIN EN 61984; DIN EN 60664-1
- 6 PACKAGING: 5 PIECES IN A CARTON
- 7 PACKAGING: 200 PIECES IN A BOX

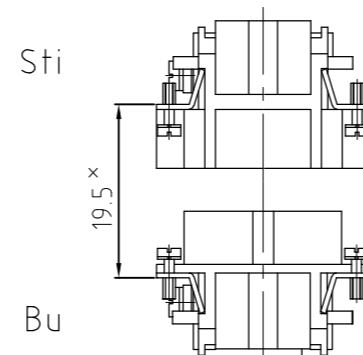


Contact arrangement view from termination side

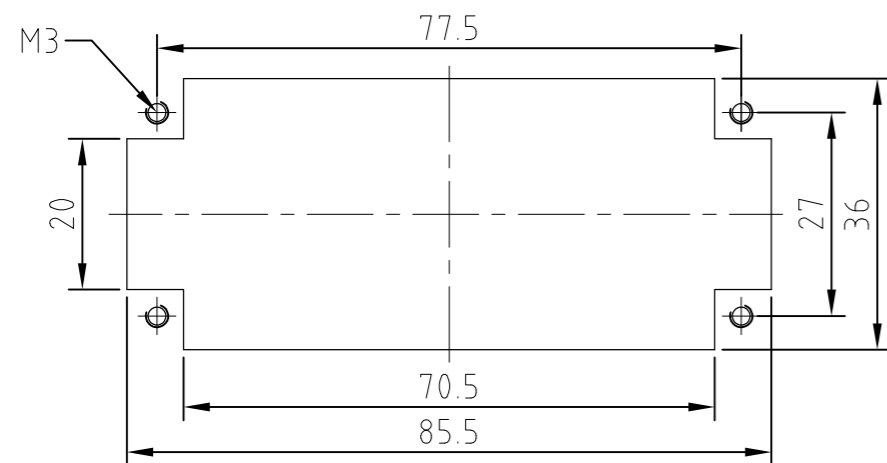


Panel cut-out for contact insert when used without housing

Assembling instruction



× Distance for guaranteed contact max: 21 mm



1	1	MALE INSERT		beige	1	-	
0-1	1-1	DESCRIPTION / BENENNUNG	MATERIAL	COLOR / FARBE	ITEM NO. POS.	REMARKS / BEMERKUNGEN	
7	6	<p>THIS DRAWING IS A CONTROLLED DOCUMENT FOR AMP INCORPORATED. IT IS SUBJECT TO CHANGE AND THE CONTROLLING ENGINEERING ORGANIZATION SHOULD BE CONTACTED FOR THE LATEST REVISION. DIESES ZEICHNUNGSDOKUMENT WIRD DURCH AMP INCORPORATED KONTROLLIERT. AENDERUNGEN, DIE DEM TECHNISCHEN FORTSCHRITT DIENEN, SIND VORBEHALTEN. DEN JEWELNS LETZTGUELTIGEN AENDERUNGSSTAND ERFAHREN SIE AUF ANFRAGE.</p> <p>DIMENSIONS: DIMENSIONEN: mm</p> <p>TOLERANCES UNLESS OTHERWISE SPECIFIED: ALLGEMEINTOLERANZEN</p> <p>n. ISO 8015 n. ISO 2768 - mH - E n. DIN 16901 - 140</p> <p>0 PLC # 1 PLC # 2 PLC # 3 PLC #</p> <p>ANGLES / WINKEL # FINISH / OBERFLAECHE / FARBE</p>		DWN Schweiger 18.06.1997	<p>AMP HTS Elektrotechnik 53819 Neunkirchen, Germany</p>		
HSB.6/35.Sti.S.B1-6.KM	HSB.6/35.Sti.S.B1-6	ORDERING TEXT / BESTELLTEXT		CHK Kramer 04.06.98		NAME MALE INSERT HSB.6/35.Sti.S.B1-6	
				APVD -		SIZE A3	RESTRICTED TO NUR FUER
				PRODUCT SPEC 108-74006		CAGE CODE 00779	
				APPLICATION SPEC 114-74007		DRAWING NO ZEICHNUNGS-NR. C-1104204	
				WEIGHT GEWICHT 86 g		MASSSTAB 1:1	
				CUSTOMER DRAWING		BLATT 1	
						OF VON 1	
						REV A4	